



1911 2011

Bonneville County

Centennial Celebration



*Celebrating 100 years of dedication,
hard work, courage, and
self reliance that demonstrate
the true Idaho spirit.*



Creating the County Bonneville

The Idaho Falls Times of February, 1911, printed:

Now Bonneville County. Legislature Passes Measure Making Idaho Falls a County Seat

Thursday last the house passed the Bingham county division bill, creating the county of Bonneville, with Idaho Falls as the county seat, by a vote of 58 to one. And thereby has Idaho Falls come to a realization of her hopes and aims after years of work and effort.

At one time considerable opposition developed against the bill, but that practically withdrew from the field and left the coast clear.

But slight changes were made in the bill as it was originally drawn up. The principal changes were the changing the name from Snake River County to Bonneville County, and making it a county of the second class instead of third. The latter was an error in drawing up the bill.

The county derives its name from Captain Bonneville, a soldier and explorer who came to the southwest in 1833 and remained two years, crossing the territory embraced in old Bingham county a number of times, spending part of one winter at Tilden. After the war with Mexico he was returned to Oregon by the War department. He served for a long time as commissioner of Indian Affairs in Oregon and Washington.

A number of attempts have been made to divide Bingham county, but in every instance those in charge could not agree on what would be considered an equitable division; one that would be agreeable to a majority of the people of both the north and the south parts of the county. (source: www.museumofidaho.org).

On February 7, 1911, Governor James Henry Hawley put an end to a fight for county division by signing the bill designating Bonneville County. Senator St. Clair, who authored the bill, was presented with the pen with which the governor signed the bill.

Newly appointed county officers went immediately to work, selecting their temporary meeting location and the city dreamed of future prosperity as county seat.

Commissioners selected in 1911 were W. D. Huffaker, District 1; John Empey, District 2; and Robert L. Bybee, District 3.

Along with being the county seat, Idaho Falls is also the largest city in the county. As the most populous county in eastern Idaho, Bonneville County currently ranks fourth in the state, behind Ada, Canyon, and Kootenai. Other incorporated cities in Bonneville County include: Ammon, Iona, Irwin, Swan Valley, and Ucon.

Did you know?

In 1911 there were approximately 5,000 people living in Bonneville County. Today, there are approximately 105,000.



Cover photos: Left. Captain Benjamin Bonneville. Center. South Fork River above Heise Hot Springs. Right. James Madison (Matt) Taylor.

Thursday, Nov. 10, 2011

Ushers:

Grand Teton Council Scouts

Prelude Music

The Decades

*Don Christensen, Rick Harris,
Aileen Earl, Lane Allgood*

Presentation of Colors

Idaho Falls Firefighters Pipes
& Drums

*Pipes: Cody Anderson,
Pipe Major; Kim Getsinger,
Jeff Parsons, Levi McAfee,
Dan Muhelestein, Josh Jacobsen.
Drums: Nate McKinney, Drum
Major; Parker Ruby, Drum
Seargent; Roger Anderson, Chet
Pugmire, Tony Martin, Nick
Stallings, Rob Hall*

Color Guard

Bonneville County Sheriff's
Office

*Bryan Lovell, Kathy Parker,
Elena Medrano, Kip Davies,
Michael Vasquez*

Pledge of Allegiance

Bonneville County Sheriff
Paul Wilde

Welcome and Introductory Remarks

Centennial Gala Chair,
Ann Rydalch

"We Are The Music Makers"

Bonneville County Centennial
High School Choir

*Composed by Patti Drennan.
Conducted by Zola Jensen, Idaho
Falls High School Choral Music
Director. Accompanied by
Camille Blackburn, Hillcrest
High School Choral Director.*

Remarks

Bonneville County Heritage
Association Chair, Mary Jane
Fritzen, and Co-Chair, Gary
Goodson

Remarks

Bonneville County
Commissioners Roger
Christensen, Lee Staker, and
Dave Radford

"When I First Came to This Land"

Bonneville County Centennial
High School Choir

*Arranged by Robert DeCormier.
Conducted by Mark Anderson,
Skyline High School Choral
Music Director. Accompanied
by Camille Blackburn, Hillcrest
High School Choral Director.*

Remarks, Proclamations, and Resolutions

Commissioner Dave Radford

Governor's Proclamation Presentation

Lt. Governor Brad Little

Congressional Record Presentation

U. S. Senator Mike Crapo
U. S. Senator Jim Risch

Proclamation from Six Area Mayors

Iona Mayor Brad Anderson

*Idaho Falls Mayor Jared
Fuhriman*

Ucon Mayor David Blain

Ammon Mayor Steve Fuhriman

Swan Valley Mayor Dave

Sargent

Irwin Mayor Rhett Bradford

House Concurrent Resolution

Senator Bart Davis &

Representative Linden Bateman

Recognition of Sponsors & Supporters

Commissioner Dave Radford

*Delbert V. & Jennie H. Groberg
Family Trust*

*Eastern Idaho Regional Medical
Center*

Farr Candy Company

Idaho National Laboratory

*Idaho Travertine Corporation
Intermountain Film and Video
Productions Company*

Jim's Trophy Room

Melaleuca, Inc.

Museum of Idaho

Post Register

Rocky Mountain Power

The Smith Group

U.S. Department of Energy

Idaho Operations Office

Kris Burnham

Lori McNamara

Richard H. Groberg

William & Jeanne Rigby

"Stand by Me"

The Decades

Video Presentation

Bonneville County: Celebrating 100 Years

*An original video produced by
Paul Jenkins, Intermountain
Film and Video Productions
Company*

"Home on the Range"

Bonneville County Centennial
High School Choir

*Arranged by Mark Hayes.
Conducted by Steve Dresen,
Bonneville High School Choral
Music Director. Accompanied
by Camille Blackburn, Hillcrest
High School Choral Director.*

Closing Remarks

Ann Rydalch

Postlude Music

The Decades

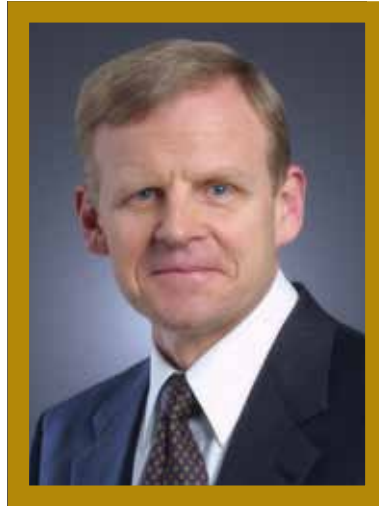


Minnie Gibson Hitt, an
admired citizen of early Idaho Falls.

Featured Speakers

Vice Admiral John J. Grossenbacher (Ret.) and Director of Idaho National Laboratory

Mr. Grossenbacher is the Director of the Idaho National Laboratory and President of Battelle Energy Alliance, LLC (BEA). His credentials and experience include leadership and management of large institutions with substantial efforts focused on technology research and development. Before joining Battelle, Mr. Grossenbacher had a distinguished career with the U.S. Navy, achieving the rank of Vice Admiral and Commander of the U.S. Naval Submarine Forces. He earned a bachelor of science degree in Chemistry from the U.S. Naval Academy, and he holds a master of arts degree in International Relations from the Johns Hopkins University. In addition, he completed the Harvard University Graduate School of Business Administration Program for Management Development. He is a leader with a refined sense of strategy, an in-depth technical knowledge and a focus on delivering results. He is one of only a handful of officers in U.S. Navy history to be awarded both the Stockdale and David



Vice Admiral John J. Grossenbacher (Ret.)

Lloyd Awards for Leadership Excellence. As Commander of the U.S. Naval Submarine Forces, Vice Admiral Grossenbacher led the integration and consolidation of the U.S. Navy's Atlantic and Pacific submarine forces. He is noted for his ability to build and lead multi-disciplinary teams, to meet complex science and technology challenges, and to achieve success in developing and sustaining collaborative relationships with multiple stakeholders.

Brigadier General Alan C. Gayhart, Idaho National Guard

Assistant Adjutant General - Army, Idaho National Guard Brigadier General Alan C. Gayhart assumed the duties as the Assistant Adjutant General - Army, Idaho National Guard in December 2005. He also serves as the Commander, Idaho Army National Guard, responsible for the strength, training, readiness, and management of all Army National Guard units within Idaho.

General Alan C. Gayhart was commissioned through the Officer Candidate School in May 1977. Prior to receiving his commission, General Gayhart served as an enlisted member of the 116th Armored Cavalry Regiment of the Idaho Army National Guard. He has served in increasing levels of responsibility in Cavalry and Armor units at all levels of command, including troop command with the 11th Armored Cavalry Regiment in Europe. General Gayhart has also served as the officer in charge of Military Support to Civilian Authorities, Deputy Chief of Staff, Operations and Chief of Staff for the State Headquarters, Idaho Army



Brigadier General Alan C. Gayhart

National Guard. He commanded the 116th Brigade Combat Team in Kirkuk/Sulaymaniyah, Iraq, during its deployment in support of Operation Iraqi Freedom III.

Friday, Nov. 11, 2011

**Bonneville County Centennial
Salute to our Military and Veterans**

Ushers:

Grand Teton Council Scouts

Prelude Music

Eastern Idaho Technical College
Wind Ensemble
Doug Wareing, Conductor

Presentation of Colors

Idaho Falls Firefighters Pipes
& Drums
*Pipes: Cody Anderson,
Pipe Major; Kim Getsinger,
Jeff Parsons, Levi McAfee,
Dan Muhelestein, Josh Jacobsen.
Drums: Nate McKinney, Drum
Major; Parker Ruby, Drum
Seargent; Roger Anderson, Chet
Pugmire, Tony Martin, Nick
Stallings, Rob Hall*

Color Guard

Bonneville County Veterans
Memorial Team

Pledge of Allegiance

Bonneville County Prosecuting
Attorney, Bruce Pickett

Welcome and Introductory Remarks

Centennial Gala Chair,
Ann Rydalch

Remarks

Bonneville County Heritage
Association Chair, Mary Jane
Fritzen, and Co-Chair, Gary
Goodson

Remarks

Bonneville County
Commissioners Roger
Christensen, Lee Staker, and
Dave Radford

Congressional Record Presentation

Congressman Mike Simpson

Presentation to Sponsors and Supporters

Commissioner Dave Radford
*Delbert V. & Jennie H. Groberg
Family Trust
Eastern Idaho Regional Medical
Center
Farr Candy Company
Idaho National Laboratory
Idaho Travertine Corporation
Intermountain Film and Video
Productions Company
Jim's Trophy Room
Melaleuca, Inc.
Museum of Idaho
Post Register
Rocky Mountain Power
The Smith Group
U.S. Department of Energy
Idaho Operations Office
Kris Burnham
Lori McNamara
Richard H. Groberg
William & Jeanne Rigby*

Speaker

Vice Admiral John J.
Grossenbacher (Ret.) and
Director of Idaho National
Laboratory

Video Presentation

*Bonneville County: Celebrating 100 Years
An original video produced by
Paul Jenkins, Intermountain
Film and Video Productions
Company*

Recognition of Military and Veterans

Bob Skinner

Speaker

Brigadier General Alan C.
Gayhart, Idaho National Guard

"America's Finest"

Eastern Idaho Technical College
Wind Ensemble
Doug Wareing, Conductor

Closing Remarks

Ann Rydalch

Postlude Music

Eastern Idaho Technical College
Wind Ensemble



Bonneville County's first Courthouse was a two-story brick business building on the southeast corner of Broadway and Capital. On July 9, 1912, the County Commissioner's purchased a site at the end of C Street on which to build a Courthouse, paying \$7,600 for the property. Back then, C Street was out in the country. In 1919, citizens voted to bond the county for \$250,000 to build a new Courthouse. It formally opened in 1921. On July 10, 1979, it was listed on the National Register of Historic places as an example of neo-classical public architecture.

Saturday, Nov. 12, 2011 . Matinee

Ushers

Grand Teton Council Scouts

Prelude Music

Idaho Falls Old Time Fiddlers

Teresa Tomita, Monty Mortensen, Harold Sorensen, Bob Butler, Charlie Lahm, Dick & Sonja Sanders, Joe & Barbara Albert, Gail Fielding, Harvey Meyer, Roy Hosking, Ted Kirkpatrick, Dave Schjeldahl, Laura Alderdyce, Val Crow, Deloras Park, Inga Tyler, Darryl Harris

Presentation of Colors

Idaho Falls Firefighters Pipes & Drums

Pipes: Cody Anderson, Pipe Major; Kim Getsinger, Jeff Parsons, Levi McAfee, Dan Muhelestein, Josh Jacobsen. Drums: Nate McKinney, Drum Major; Parker Ruby, Drum Seargent; Roger Anderson, Chet Pugmire, Tony Martin, Nick Stallings, Rob Hall

Color Guard

Bonneville County Sheriff's Office

Michael Vasquez, Kathy Parker, Mark Mecham, Bryan Aeschbacher, Kip Davies

Pledge of Allegiance

Bonneville County Assessor, Blake Mueller

Welcome and Introductory Remarks

Centennial Gala Chair, Ann Rydalch

"We Are The Music Makers"

Bonneville County Centennial High School Choir

Composed by Patti Drennan. Conducted by Zola Jensen, Idaho Falls High School Choral Music Director. Accompanied by Camille Blackburn, Hillcrest High School Choral Director.

Remarks

Bonneville County Heritage Association Chair, Mary Jane Fritzen, and Co-Chair, Gary Goodson

"Red Wing/Snow Deer"

Idaho Falls Old Time Fiddlers

Remarks

Bonneville County Commissioners Roger Christensen, Lee Staker, and Dave Radford

"When I First Came to This Land"

Bonneville County Centennial High School Choir

Arranged by Robert DeCormier. Conducted by Mark Anderson, Skyline High School Choral Music Director. Accompanied by Camille Blackburn, Hillcrest High School Choral Director.

Video Presentation

Bonneville County: Celebrating 100 Years

An original video produced by Paul Jenkins, Intermountain Film and Video Productions Company

"Home on the Range"

Bonneville County Centennial High School Choir

Arranged by Mark Hayes. Conducted by Steve Dresen, Bonneville High School Choral Music Director. Accompanied by Camille Blackburn, Hillcrest High School Choral Director.

Closing Remarks

Ann Rydalch

Postlude Music

Idaho Falls Old Time Fiddlers



The iconic Saddlesore Saloon sign, Swan Valley.



Crowds lining the streets for parades in Idaho Falls.

Saturday, Nov. 12, 2011

Ushers:

Grand Teton Council Scouts

Prelude Music

Idaho Falls Old Time Fiddlers

Teresa Tomita, Monty Mortensen, Harold Sorensen, Bob Butler, Charlie Lahm, Dick & Sonja Sanders, Joe & Barbara Albert, Gail Fielding, Harvey Meyer, Roy Hosking, Ted Kirkpatrick, Dave Schjeldahl, Laura Alderdyce, Val Crow, Deloras Park, Inga Tyler, Darryl Harris

Presentation of Colors

Idaho Falls Firefighters Pipes & Drums

Pipes: Cody Anderson, Pipe Major; Kim Getsinger, Jeff Parsons, Levi McAfee, Dan Muhelestein, Josh Jacobsen. Drums: Nate McKinney, Drum Major; Parker Ruby, Drum Seargent; Roger Anderson, Chet Pugmire, Tony Martin, Nick Stallings, Rob Hall

Color Guard

Bonneville County Sheriff's Office

Michael Vasquez, Kathy Parker, Mark Mecham, Bryan Aeschbacher, Kip Davies

Pledge of Allegiance

Bonneville County Treasurer,
Mark Hansen

Welcome and Introductory Remarks

Centennial Gala Chair,
Ann Rydalch

"We Are The Music Makers"

Bonneville County Centennial High School Choir
Composed by Patti Drennan. Directed by Zola Jensen, Idaho Falls High School Choral Music Director. Accompanied by Camille Blackburn, Hillcrest High School Choral Director.

Remarks

Bonneville County Heritage Association Chair Mary Jane Fritzen and Co-Chair, Gary Goodson

Remarks

Bonneville County Commissioners Roger Christensen, Lee Staker, and Dave Radford

"When I First Came to This Land"

Bonneville County Centennial High School Choir
Arranged by Robert DeCormier. Directed by Mark Anderson, Skyline High School Choral Music Director. Accompanied by Camille Blackburn, Hillcrest High School Choral Director.

Treasures of Bonneville County Contest Winners

Joe Stewart and Dick Kenney

Awards to County Volunteer Treasures

Bonneville County Commissioners Roger Christensen, Lee Staker, and Dave Radford

"Orange Blossom Special"

Idaho Falls Old Time Fiddlers

Video Presentation

Bonneville County: Celebrating 100 Years
An original video produced by Paul Jenkins, Intermountain Film and Video Productions Co.

"Home on the Range"

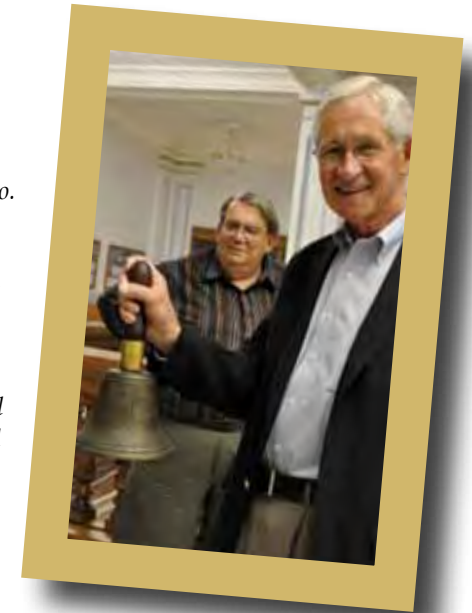
Bonneville County Centennial High School Choir
Arranged by Mark Hayes. Directed by Steve Dresen, Bonneville High School Choral Music Director. Accompanied by Camille Blackburn, Hillcrest High School Choral Director.

Closing Remarks

Ann Rydalch

Postlude Music

Idaho Falls Old Time Fiddlers



Bonneville County Heritage Association Co-chair Gary Goodson.

From the Bonneville County Heritage Association



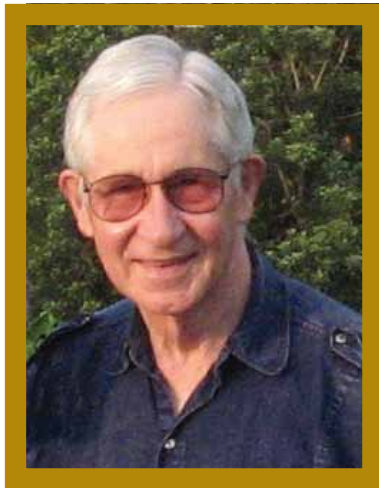
Mary Jane Fritzen,
Bonneville County Heritage Association
Chair

As a native of Idaho Falls, I feel grateful for the growth and development of Bonneville County. During my youth it was an agricultural community, a good place in which to live. After high school graduation many of us went away for college and professional experience, feeling adequately prepared. Now we want to give back to newcomers and younger generations, as well as old-timers, some of the community spirit we have felt.

About six years ago we met with county commissioner Dave Radford to organize the Bonneville County Heritage Association. In 2009 BCHA published a historical novel for our schools based on the real-life experiences of an Eagle Rock pioneer boy. We have also enlisted more than 50 volunteers to gather and present to the public stories of their various communities or institutions within the county. These histories will be contributed to the Museum of Idaho. Our presenters and many

other volunteers have provided thousands of hours of service so that all may join to celebrate the heritage of Bonneville County.

As in the fable, the bluebird of happiness is apt to be found in one's own backyard.



Gary Goodson,
Bonneville County Heritage Association
Co-Chair

I have appreciated being part of the Bonneville County Heritage Association and the great volunteer effort to help Bonneville County and the people of this area celebrate our county centennial. Great thanks is extended to the many who have shared the histories of their communities and their interests. Appreciation is extended to all those who have made this celebration possible. Special thanks goes to our sponsors and others who have contributed their significant support to make our celebration a success.

In reflecting on the many facets of our history I agree with Idaho Falls Mayor Jared Fuhrman that the most outstanding quality of the county is the people. We have experienced successes and trials over the past 100 years of our county's history. But as difficulties and challenges arose, we have worked together to make it through to better times.

Growing up on a farm in Ammon, I gained a love of our agricultural heritage. As a student and corporate attorney living in Washington D.C., New York City, Boston, Pittsburgh, and Houston before returning to Idaho Falls 17

years ago, I gained a great appreciation for the history of our nation. Since returning, and especially the past couple of years, I have gained a new appreciation for Idaho, and especially for Bonneville County and its diverse history.

From the Centennial Gala Committee



Ann Rydalch, Centennial Gala Chair

This County Centennial Gala event ends the year-long county centennial celebration. We started our celebration off on February 7, 2011 with an opening ceremony in the Centennial Court Room at the Bonneville County Court House. This opening date coincided with when our county was formed on February 7, 1911. It was at this opening ceremony that we also honored our County Resident Judges, with a presentation by Judge Dane H. Watkins Jr., on the First Judges and Courts to the Present System.

Each month throughout this year, authors have presented their community histories, providing details and discussions about the people and events in these various communities that have been such an important part of making Bonneville County what it is today. I'm grateful that our County Commissioners had the vision and desire to celebrate the heritage that made this County so great.

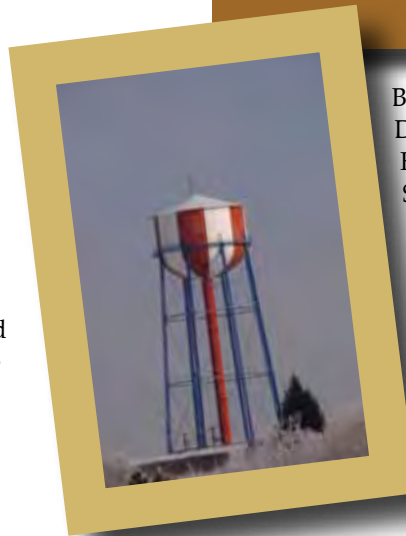
And now, we come to this ending County Centennial Gala...a Gala that will feature talent and inspiration by many. Many volunteers have made this Gala possible. Ushering will be provided by the Grand Teton Council Scouts. A first of its kind is the Bonneville County Centennial High School Choir — a choir of 177 choir students from the four area high schools coordinated by Camille

the Idaho Falls Old Time Fiddlers. We will pay special tribute to our military and veterans on Veterans Day, Nov. 11, 2011, which coincides with our Gala. The greatness of this heritage will also be captured, and shown at these Gala events, by an original video, Bonneville County: Celebrating 100 Years, produced by Paul Jenkins of Intermountain Film & Video Productions Company. The photos by Reuel Smith and many



Did you know?

Bonneville County was established February 7, 1911, by the Idaho Legislature and was named after Captain Benjamin Bonneville, a French-born officer in the United States Army.



Blackburn, Choir Director at Hillcrest High School.

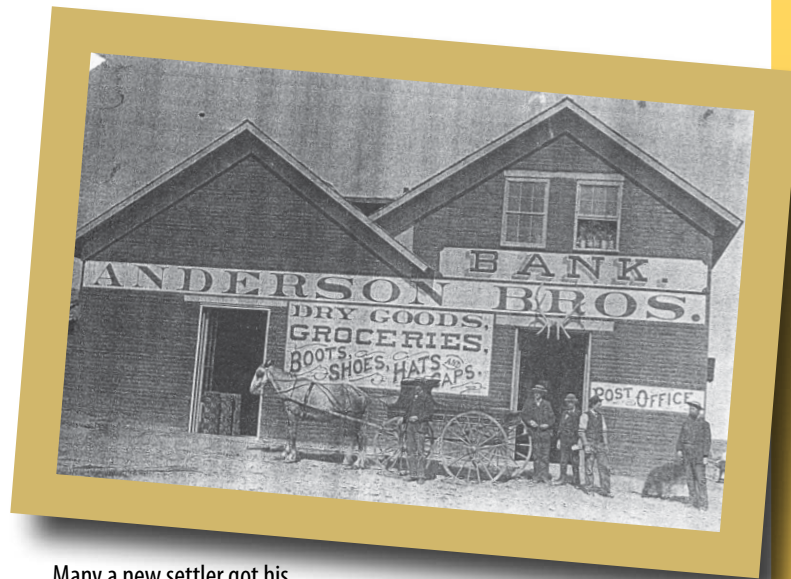
We also have music by The Decades, the Eastern Idaho Technical College Wind Ensemble and

others in this program also capture the spirit of our county and remind us of our heritage and yet portray the wishes for tomorrow. To the many volunteers that have made this centennial year-long celebration possible, I give my sincere thanks. It has been my privilege to be a part of this celebration.

City of Idaho Falls water tower.



Early Ucon businesses.



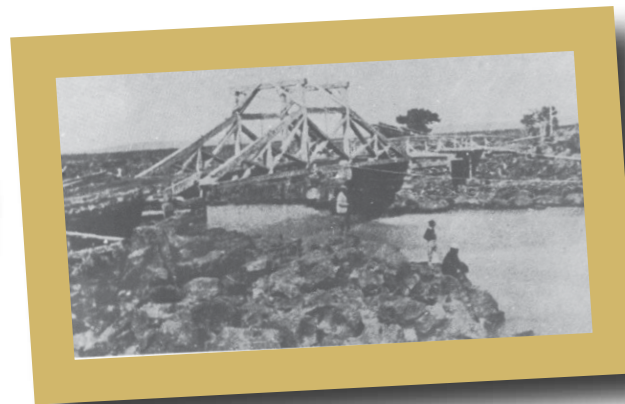
Many a new settler got his start with the help of Anderson Brothers, as Idaho Falls began to grow.

Did you know?

The old Grist Mill on the west bank of the Snake River in 1889 used wood as fuel to generate steam to turn the mill wheels in its process of flour making, and furnished a market for cedar wood.



Dry farm grain harvest in Osgood.



Taylor's bridge, pictured here in 1871, became the crossing point for all north-south traffic.

Centennial Celebration Wishes
from our Elected Officials



A Message from the Bonneville County Commissioners



County Commissioner Roger Christensen



County Commissioner Lee Staker



County Commissioner Dave Radford

While looking forward with an eye of faith and hope in our future, it is important and good sometimes to look back. This is what hundreds of volunteers—local historians and other citizens of Bonneville County have done this year.

Our county's 100-year birthday celebration kicked off in the historic Centennial courtroom on the 7th of February 2011 the same day we as a county were created 100 years earlier. The history of the courts was rehearsed by newly appointed judge Dane Watkins Jr. Also this year a book entitled "George Brunt, Young Pioneer of Eagle Rock," was published and provided to the schools to be taught in every fourth grade class in Bonneville County. Keeping our youth engaged in local history is a wonderful goal and something we all should continue to strive for.

There have been 18 various presentations throughout this past year, all free to the public, and



First New Sweden School, 1901.

On February 7, 1911 an area of 1900 square miles of land and 32 square miles of water was split off from Bingham County to create our present Bonneville County. With a population estimate of some 5,000 people in 1911, to the 2011 estimate of 105,000 residents our county has seen some wonderful changes in these past 100 years.



Did you know?

Bonneville County is 1,901 square miles with 1,869 square miles of land and 32 square miles of water.

they have been exceptional. Nearly all areas of the county have been explored from Osgood to Palisades Dam and from stagecoach stations to the Idaho National Lab (INL) just to name a few. They have given a wonderful and historic glimpse of our diverse county history and the presenters are to be given a sincere thank you!

This past summer a terrific free ice cream event sponsored by Farr's Ice Cream, The City of Idaho Falls, and Bonneville County took place near the courthouse with over 10,000 people attending. Also this year's fourth of July parade's theme was "100 Years of Patriotism in

Bonneville County" together with events in Ammon and Iona capped off a memorable 2011 summer.

The Public is involved in identifying the 100 key county treasures and an honorable mention list as well. This will include a self guided tour opportunity and will help our residents appreciate the special place Bonneville County is to work, live, and raise a family. It is our hope that when the 200 year anniversary of our county comes around in 2111, these first 100 treasures will not be forgotten.

Our Veterans Day celebration on 11-11-2011 will honor our

servicemen and women and reminds us that the man who our county is named after, Captain Benjamin L.E. Bonneville was also a military officer when he obtained leave to explore this area of the Rocky Mountains crossing through our county in the 1830s. We all are standing on the shoulders of those who have gone before and have made incredible contributions to our present way of life.

With the culmination of the Grand Finale events here at the Civic Auditorium on the 10th 11th and 12th of November, it is also our hope that our future will

always be bright. We believe our best days are still ahead, and we hope you all have enjoyed the year-long look back. Our sincere thanks goes out to all the volunteers, history buffs, sponsors, young people and contributors in any way to the anniversary of our wonderful county of Bonneville.

Thank you.



New Iona school built in 1903-1904.



Dedicated in 1923, the LDS Hospital stood beside the Snake River for many years.

Bonneville County Elected Officials



Prosecuting Attorney Bruce Pickett



Sheriff Paul Wilde



Assessor Blake Mueller



Treasurer Mark Hansen



Clerk Ron Longmore



Coroner Johnathon Walker



By the 1919, Ririe was a large bustling community of many businesses, four hotels, and several restaurants. On July 4, 1919, a fire destroyed almost half of the businesses in the town.

Happy 100th Anniversary



Idaho Falls Mayor Jared Fuhrman

It is a pleasure serving as Mayor of Idaho Falls during the 100th Anniversary celebration of Bonneville County. A yearlong event, highlighted by various historical events which have occurred in our region and have shown how we have grown into what is now a major location for agriculture, business, science, and the technology which comes out of the INL.

Growing up in this area has instilled in me the many qualities and attributes which our local citizens have added to our heritage. This is a community and county whose hard working families contribute in the quality of life we all cherish.

Idaho Falls is the county seat, and the largest city in the county, which over the years has developed as the regional hub of Eastern Idaho.

With agriculture and the growing influence of the Idaho National Laboratory, our area has also nurtured a growing medical community, providing an array of services that can easily be found in any major city throughout the United States.

Our area has also seen a thriving growth in the high tech sector and air transportation which has also played an important role in the growth of our area. The Idaho Falls Regional Airport provides direct service to Salt Lake City, Denver, Boise, San Francisco, Las Vegas, Long Beach, California, and the Phoenix/Mesa area of America.

Over all, with all these strong attributes, the one basic fiber that has been part of our last 100 years is the people that live here. It is neighbor helping neighbor and that western resilience that we take care of our own, we don't wait for help, and even through tough times, we come out of it in a much stronger position. It is truly the "Spirit of Idaho Falls" shining through.

Bonneville County, along with Idaho Falls and the surrounding communities, which lie within its border, work together in a partnership which has truly benefitted our region and makes it one of the marvelous spots in the State of Idaho.

So Happy Birthday Bonneville County! May our community continue to grow and prosper.



—Idaho Falls Mayor Jared Fuhrman

Bonneville County Resident Judges



Judge Dane Watkins, Jr.

Imagine the train whistles, shouts and hollers at the marking of the day Bonneville became a county. As we look back today with grateful hearts, through a vicarious vision, we see the beginning as a day to celebrate. We appreciate the memory of our past and anticipate the vision of our future. How did justice begin for our ancestors? Bonneville belonged to one of three judicial districts with one judge per district. The third district included all of Southeastern Idaho. The population was scattered. Often, non-lawyers were appointed to be local justices of the peace. Barbers settled disputes. Cattleman imposed sentences. Blacksmiths issued fines.

There were challenges associated with the vast geography of one judge. I humbly relate to that first district judge as I, in my first weeks as a district judge traveled to six southeastern counties. My

Volkswagon carried me nearly 300 miles in two days to places involving

disputes ranging from assault to third cuts of hay. My distant predecessor

travelled 600 miles on a horse to hold court.

Some cases moved quickly. Charges, trials, verdicts and sentences occurred within days. Other cases proceeded painstakingly slow. Small claims disputes and appeals took years to reach resolution. Over time, three judicial districts became five. Presently, Bonneville belongs to the Seventh Judicial District.

The courts have undertaken giant leaps and advancements. Bonneville and the Seventh Judicial District are leading the way with specialty courts; including drug courts, juvenile courts, DUI courts, family courts, and nationally recognized mental health courts. There has been a significant paradigm shift in the justice system's response to the challenges of drugs and controlled substances, of juvenile crimes, and of mental health issues facing our communities.

We see movements towards early case resolution both in the civil and criminal arenas, alternative dispute resolution by arbitration and mediation, and the encouragement of small disputes being resolved without attorneys. There are legal aid and advocacy groups allowing greater access to the courts like never before.

Media coverage is allowed in the courtroom so that the courthouse's activities can be reported in the paper, on television and on the internet. Access to cases is available to the public from your kitchen table.

Equally impressive as the changes over a hundred years is the day to day happenings. Any day of the week you will see juries hearing cases about injuries and contracts. Juries deciding the fate of men and women accused of burglaries, drugs and murder. You will smile at weddings and adoptions, yet saddened at children being removed from their parents because of drug additions and neglect. It is humbling to consider what has and continues to occur within this county's judicial history.

As we take time to look back and celebrate, we rekindle appreciation. We invest gratitude and foster optimism. Justice has been sought and achieved from 1911 to 2011.

I leave you with an enduring conviction that the heritage of this justice system over the course of 100 years has been a noble endeavor.



Justice for 100 Years



Judge Mark Riddoch



Judge Steven A. Gardner



Senior Judge Linda Cook



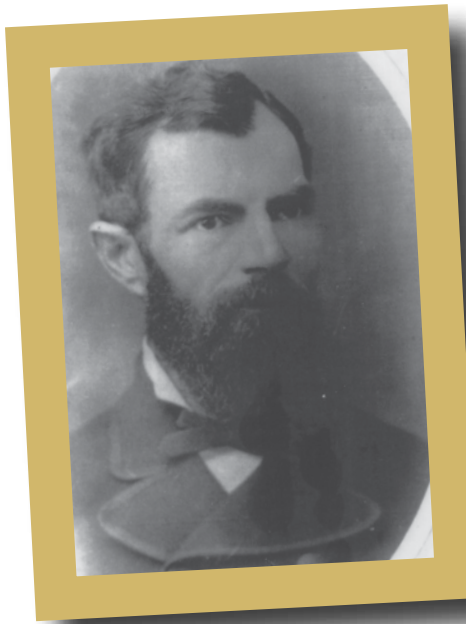
Judge Jon J. Shindurling



Judge Earl Blower



Judge Joel E. Tingey



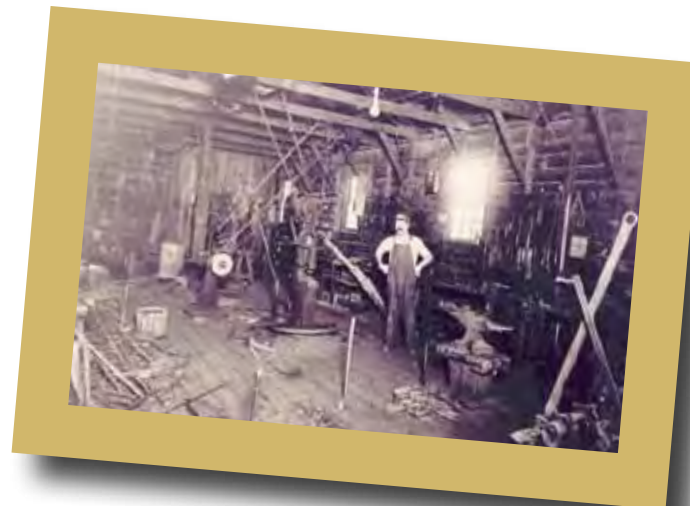
Charles C. and Sarah Kane Tautphaus, early Idaho Falls residents who developed an oasis in the middle of the desert on land that later became Tautphaus Park.



The Idaho Falls train depot, which opened in 1911, was in the downtown business district facing C Street.



Boat dock at Tautphaus Park.



Ucon blacksmith shop.

Centennial Celebration Proclamations and Resolutions



*Mayor's and Governor's
Proclamation*

PROCLAMATION

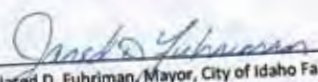

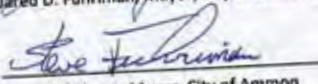
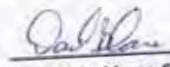
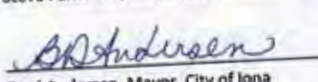
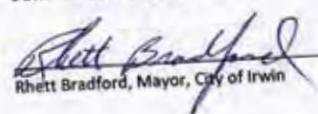
- WHEREAS,** Bonneville County, which is located in the State of Idaho; and
- WHEREAS,** The City of Idaho Falls, designated as the County Seat; and
- WHEREAS,** Bonneville County was named after Benjamin Bonneville, a French-born officer in the U.S. Army, fur trapper, and explorer in the American west; and
- WHEREAS,** Bonneville County was partitioned from Bingham County, which was part of Oneida County until 1893; and
- WHEREAS,** Bonneville County's Centennial Anniversary will be an ongoing celebration throughout 2011; and
- WHEREAS,** During 2011, local citizens will use this occasion to highlight the rich history of Bonneville County, by renewing our commitment to showcase the many noteworthy historical events which have taken place during the last 100 years.

NOW, THEREFORE, I JARED D. FUHRIMAN, as Mayor of the City of Idaho Falls, do hereby join my fellow Bonneville County Community Mayors in proclaiming the year of 2011 as

BONNEVILLE COUNTY'S 100TH BIRTHDAY CELEBRATION

And I call upon all citizens to join in this observance by showing support and appreciation with the many scheduled events which will focus on the County's rich historical contribution.

DATED this 7th day of February, 2011

 Jared D. Fuhriman, Mayor, City of Idaho Falls	 Dave Sargent, Mayor, City of Swan Valley
 Steve Fuhriman, Mayor, City of Ammon	 David Blain, Mayor, City of Ucon
 Brad Andersen, Mayor, City of Iona	 Rhett Bradford, Mayor, City of Irwin

Executive Department
State of Idaho

The Office of the Governor
Proclamation

State Capital
Boise




- WHEREAS, Bonneville, Idaho was founded in 1911; and*
 - WHEREAS, Bonneville, Idaho symbolizes a vision for adventure, courage and self reliance and demonstrates the true Idaho spirit; and*
 - WHEREAS, reaching its 100-year celebration, Bonneville demonstrates dedication and hard work that maintains a positive community environment now and for generations to come; and*
 - WHEREAS, Idaho citizens deserve the opportunity to recognize Bonneville's great milestone of reaching its 100-year celebration;*
- NOW, THEREFORE, I, C.L. "BUTCH" OTTER,** Governor of the State of Idaho, do hereby proclaim February 7, 2011 as the

**100th ANNIVERSARY OF
BONNEVILLE, IDAHO**



IN WITNESS WHEREOF, I have hereunto set my hand and caused to be affixed the Great Seal of the State of Idaho at the Capitol in Boise on this 7th day of February in the year of our Lord two thousand and eleven and of the Independence of the United States of America the two hundred thirty-fifth and of the Statehood of Idaho the one hundred twenty-first.


BEN YURSA
SECRETARY OF STATE


C.L. "BUTCH" OTTER
GOVERNOR

STATE OF IDAHO HOUSE OF REPRESENTATIVES



HOUSE CONCURRENT RESOLUTION NO. 2 BY EDUCATION COMMITTEE

A CONCURRENT RESOLUTION
STATING FINDINGS OF THE LEGISLATURE AND CONGRATULATING BONNEVILLE
COUNTY FOR ITS CENTENNIAL ANNIVERSARY AS A COUNTY.

Be It Resolved by the Legislature of the State of Idaho:

WHEREAS, Bonneville County was established February 7, 1911, by the Idaho Legislature and was named after Captain Benjamin Bonneville, a French born officer in the United States Army who was a fur trapper and explorer in the American West and is noted for his expeditions to the Oregon Country and the Great Basin in the 1830's; and

WHEREAS, the first bridge spanning the Snake River was constructed by Matt Taylor in 1865, around which developed a settlement known as Eagle Rock, which became known as Idaho Falls in 1891; and

WHEREAS, Bonneville County was formed from Bingham County, which was part of Oneida County until 1893 and Bonneville County is part of the Idaho Falls statistical area and is 1,901 square miles with 1,869 square miles of land and 32 square miles of water with its population in 2000 of 82,522 and its estimated 2008 population of 99,135; and

WHEREAS, the following cities are included in Bonneville County: Ammon, Idaho Falls, Iona, Irwin, Ririe, Swan Valley and Ucon as well as the unincorporated communities of Lincoln and Osgood; and

WHEREAS, the Snake River flows northwest through Bonneville County beginning at the Wyoming border as the Palisades Reservoir and the river exits the county midway on its northern border, turns and re-enters approximately twenty miles west to flow southwest through Idaho Falls; and

WHEREAS, Caribou National Forest, Grays Lake National Wildlife Refuge and Targhee National Forest all lay partially within the boundaries of Bonneville County, and Yellowstone National Park is adjacent; and

WHEREAS, Bonneville County's county seat is Idaho Falls and the waterfalls in the city limits are a focal point that were created by a diversion dam that provides hydroelectric power; and

WHEREAS, the original dam was built in 1909 and in 1928 a bond election was called for \$100,000 to finish the power plant; today's dam was constructed as part of a \$55.3 million hydroelectric power project in 1982, and the citizenry of Idaho Falls paid \$48.0 million in taxes to fabricate the hydroelectric power plant and the U.S. Department of Energy in turn funded \$7.3 million allowing for completion of the power plant for a total of three power plants that produce hydroelectric power for Idaho Falls and combined they produce fifty percent of the electricity needed; and

WHEREAS, Bonneville County is less than 100 miles from Yellowstone and Grand Teton National Parks and is one of eastern Idaho's regional centers for shopping, medical care, cultural awareness, education, development of new energy and education infrastructure with the AREVA Eagle Rock Enrichment Facility, and the Center for Advanced Energy Studies (CAES); and

WHEREAS, in 1931 under the direction of E. F. McDermott, its publisher, the Post newspaper purchased the ailing Times-Register and became the Post Register and has been operating since; and

WHEREAS, in 1969 Eastern Idaho Vocational Technical School was founded in Idaho Falls and classes were held in leased buildings for an initial 330 students, and in 1975 Eastern Idaho Vocational Technical School, now called Eastern Idaho Technical College, constructed its first building on a 60 acre site donated on the Ammon-Idaho Falls border; and

WHEREAS, in 1976 a building was constructed for the Bicentennial and became University Place, with other buildings being added, giving the capability to have upper division and graduate courses offered in Bonneville County by Idaho State University and the University of Idaho; and

WHEREAS, Bonneville County is home headquarters of offices and key lab facilities of the Idaho National Laboratory (INL), the state's only federally funded research and development center and the nation's leading center for nuclear energy research, development, demonstration and deployment; and

WHEREAS, the ingenuity of INL scientists and engineers, along with that of other Idaho-based researchers, has consistently kept the state at or near the top spot in the nation in patents issued per capita; and

WHEREAS, Bonneville County has been the birthplace of many leaders including members of Congress, the United States House of Representatives and Governors; and

WHEREAS, the 1987 Legislature, with SCR 101 by Senator Ann Rydalch and Representative John Sessions, recognized and declared the Vietnam Veterans' Memorial in Freeman Park in the city of Idaho Falls, to be the official Vietnam Veterans' Memorial of the state of Idaho; and

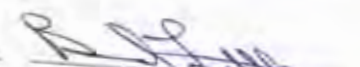
WHEREAS, Bonneville County Commissioners Roger Christensen, Lee Staker and Dave Hatford determined early on, it was important to look ahead to year 2011, the County Centennial, and they established the Bonneville County Centennial Heritage Association; and

WHEREAS, this association, under the direction of Mary Jane Fritzen and Gary Goodson, has utilized numerous volunteers, and Bonneville County authors, as well as the Museum of Idaho historically developed by the Carr family, located in Idaho Falls and the museum exhibit, to plan and celebrate the history of Bonneville County throughout the year of 2011. This includes an award winning publication by Connie Otteson, of a History of Bonneville County from the point of view of a real pioneer boy, as a supplementary text for fourth grade study of Idaho history as well as other authors' publications about Bonneville County; and

WHEREAS, histories of individual communities included in Bonneville County will be presented throughout 2011, ending with a Centennial Gala Celebration on November 10-12, 2011, honoring our military and showcasing the Bonneville County Centennial High School Choir, conducted by Hillcrest Choir Director Camille Blackburn, which will consist of high school students from Bonneville, Hillcrest, Idaho Falls and Skyline and their choir directors.

NOW, THEREFORE, BE IT RESOLVED by the members of the First Regular Session of the Sixty-first Idaho Legislature, the House of Representatives and the Senate concurring therein, that we hereby congratulate Bonneville County and its residents for its Centennial Anniversary on February 7, 2011.


Lawrence Denney, Speaker of the House


Brad Little, President of the Senate


Representative Linden B. Bateman


Senator Bart M. Davis



Bonneville County Centennial Celebration

SPEECH OF
HON. MICHAEL K. SIMPSON
OF IDAHO

IN THE HOUSE OF REPRESENTATIVES
Thursday, November 1, 2011

Mr. Speaker: It is my pleasure to congratulate Bonneville County on its 100th anniversary as an organized county in the great state of Idaho. Significant events over the past century have made for a colorful history, and this commemoration is a noteworthy event for both past and present residents of Bonneville County.

Bonneville County acquired its name from United States Army Captain B. L. E. Bonneville. He established a settlement in southeastern Idaho in the mid 1800's while exploring the Snake River area. On February 7, 1911, one hundred years ago, Bonneville County was born and that small establishment, known as Taylor's Crossing, then Eagle Rock, and now as Idaho Falls, became the heart of beautiful Bonneville County. Ammon, Iowa, Irwin, Swan Valley, and Ucon are a few of the other towns located in this distinguished county.

A vast and naturally diverse landscape offering mountain ranges, the world-renowned South Fork of the Snake River, and national forests expanding to Idaho's border with Wyoming is home now to more than 104,000 people, making Bonneville County the fourth largest county in the state of Idaho. The county is also home to the Idaho National Laboratory and Gray Lake National Wildlife Refuge and is a regional cultural destination where you may enjoy the Idaho Falls Symphony, the Museum of Idaho, the Colonial Theatre, and several art galleries.

The citizens of Bonneville County demonstrate unity and a sense of pride through their deeply sown roots. Traditions, a variety of dynamic organizations, both large and small farms, unique entrepreneurship opportunities, and a willingness to extend a helping hand within the community appropriately characterize this community and our Idaho lifestyle.

It is a privilege to represent Bonneville County and the people who structure its prominence.



United States
of America

Congressional Record

PROCEEDINGS AND DEBATES OF THE 112th CONGRESS, FIRST SESSION

Vol. 137

WASHINGTON, TUESDAY, SEPTEMBER 17, 2011

No. 131

Senate

BONNEVILLE COUNTY, IDAHO

Mr. CRAPO: Mr. President, my colleague Senator Jim Risch joins me today in recognizing Bonneville County's 100-year anniversary.

Established on February 7, 1911, by the Idaho Legislature, Bonneville County was formed out of Bingham County in eastern Idaho, along the Wyoming border. Bonneville County was named for CPT Benjamin Bonneville, an officer in the U.S. Army who was an explorer and fur trapper in the area in the 1820s.

Home to more than 100,000 Idahoans in an area of nearly 2,000 square miles, the county has diverse geography and industry. It is Idaho's fourth largest county and includes the six incorporated cities of Idaho Falls, Ucon, Iowa, Ammon, Swan Valley, and Irwin. Outside of these cities, the county has many beautiful natural features, including the Snake River, Palisades Reservoir, Caribou National Forest, Gray Lake National Wildlife Refuge, and Targhee National Forest. Family farmers produce an abundance of agricultural products, including grain, livestock, fruits and vegetables, floriculture, and poultry, throughout the county. Bonneville County also leads the Nation in energy research and development through the Idaho National Laboratory, the Center for Advanced Energy Studies, and the AREVA Eagle Rock Enrichment Facility.

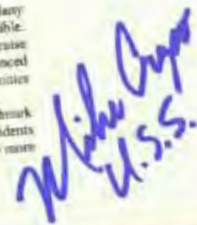
Bonneville County residents have much to celebrate with 100 years of accomplishments. The work of the Bonneville County Heritage Association and volunteers to organize events observing this milestone, including the centennial Gala Celebration in November, is commendable. Many people have worked hard to make this celebration possible.

I was blessed to grow up and together with my wife raise our children in Bonneville County, where we experienced firsthand the exceptionalities of the people and the communities of the county.

Senator Risch and I are proud to recognize this landmark anniversary. We congratulate Bonneville County residents for this centennial, and we wish its communities many more years of success.



USS



U.S.S.

Centennial Celebration Wishes
from our Supporters and Sponsors



Sponsors and Supporters

Delbert V. and Jennie H. Groberg Family Trust

Delbert Valentine Groberg was born in Idaho Falls, Idaho, February 14, 1906. By the time he was three both his parents had died. Relatives from Utah took Delbert in with open arms, but Idaho was always home.

Jennie was born in Provo, Utah, and after graduation from BYU taught at the Ammon High School in Idaho. They were married in the Salt Lake Temple on June 11, 1930, and made their home in Idaho Falls.

Delbert founded the D.V. Groberg Company in 1929. Asked why he didn't finish college first, he said, "I needed to start a business so college graduates would have a place to work." He started a building program that has kept the D.V. Groberg Company busy and the community of Idaho Falls growing.

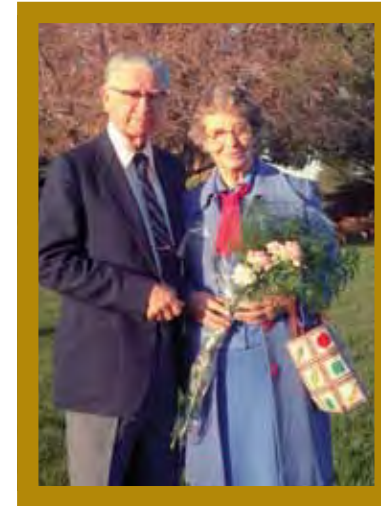
Delbert's interest in building up the communities of Bonneville County was boundless. He joined with others to bring the INL to Idaho Falls and to found the KID Broadcasting Corporation and the Bank of Commerce as well as many real estate projects. He

became a community leader serving as president or chairman of the Chamber of Commerce, Kiwanis Club, Selective Service Board, and United Way, while Jennie served in school and music organizations. For 20 years Delbert chaired committees that established Idaho Falls as a leader in patriotic activities. On the occasion of the Constitution's bicentennial, radio commentator Paul Harvey announced: "Bonneville County in Idaho is a place to go for a major celebration." The Idaho 7th District Bar Association chose Delbert for their Liberty Bell award.

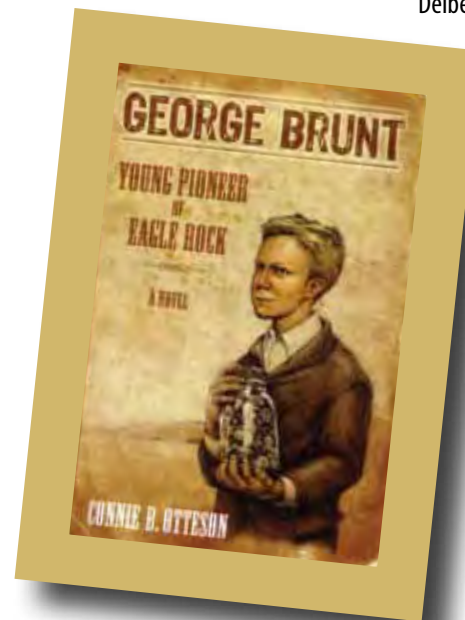
Their oldest child, Mary Jane Fritzen, took an interest in Bonneville County's upcoming 100 year anniversary. Her suggestions to celebrate this anniversary were warmly received by the Bonneville County Commissioners. Dave Radford was assigned to oversee the celebration and he asked Mary Jane to lead out. Upon Mary Jane's request, the D.V. and J. H. Groberg Family Trust agreed to finance a book for 4th grade students to learn the history of Bonneville County. The book, "George Brunt, Young Pioneer of Eagle Rock," was written by

Connie B. Otteson. The book along with a teachers supplement is in the schools in the city and county.

D.V. and Jennie H. Groberg truly loved this valley and their many friends here. They had 11 children who were raised here. Seven returned here after receiving their college degrees to work and raise families for at least part of their careers. The Trust is happy to be a part of this great celebration.



Delbert V. and Jennie H. Groberg



"George Brunt, Young Pioneer of Eagle Rock" by Connie B. Otteson.

Sponsors and Supporters

Eastern Idaho Regional Medical Center

Over the last century in Bonneville County, as dirt roads made way for sidewalks and asphalt, underground cabling took the place of telephone lines, and sleek modern cars replaced wagons, buggies and Model T's – the transformation in healthcare has been no less dramatic.

Dynamic change and impressive progress have been the hallmarks of our County's medical services for 100 years.

At the turn of the century, Idaho Falls and surrounding communities were served by Doctors Coulthard and Cline Hospital.

Later came General Hospital, The People's Hospital, and The Spencer Hospital.

Sacred Heart Hospital (later known as Parkview Hospital), and the LDS Hospital (known as Riverview Hospital), served the area beautifully for decades, and laid the foundation for the region's best healthcare.

These two hospitals merged operations in the 1970's, and were ultimately replaced when Eastern Idaho Regional Medical Center opened its doors in 1986.

From humble beginnings, the availability of medical providers and services in Bonneville County has matured into an economic engine of local prosperity, and a draw to our County from much further-flung locales, as people from southern Montana, western Wyoming and northern Utah flock here in large numbers, seeking world-class healthcare not available in their own communities.

100 Years of Bonneville County Healthcare



...and Now



EIRMC is proud to sponsor the festivities surrounding Bonneville County's Centennial Celebration. Good community health is our heritage. And we work every day to make high quality healthcare our legacy for future generations.

Although the faces and names have changed over the last 100 years, one thing remains constant: our County's commitment to a healthy citizenry. From centurions who've been around since the County's beginnings, to its tiniest newborns today, Eastern Idaho Regional Medical Center is both privileged and humbled to serve the area's healthcare needs.

Congratulations, Bonneville County. Turning 100 never looked so good!

Connect with us!



Sponsors and Supporters

Farr's Candy Company

Did you know?

On June 20, 2011, Farr Candy Company, celebrating their 100 year anniversary, broke the record of the amount of ice cream scooped in an hour at a single event with 6,284 cones scooped at their free ice cream social. For this two hour event, they served over 9,000 people with free ice cream.

A large graphic tilted at an angle, featuring a faded background image of a 'Farr's ICE CREAM' sign. The text 'The Flavor of Sweet Success' is prominently displayed in the center, with 'The Flavor of' in black, 'Sweet' in large red letters, and 'Success' in even larger red letters. To the right of the text is a small, framed black and white portrait of a man in a suit. Below the main title, the text '100 years of Farr's Candy Company' is written in a smaller, grey font. At the bottom left of the graphic, it says '46 IDAHO FALLS MAGAZINE JULY/AUGUST 2011'. At the bottom right, it says 'Courtesy of Idaho Falls Magazine'.

**The Flavor of
Sweet Success**

100 years of
Farr's Candy Company

46 IDAHO FALLS MAGAZINE JULY/AUGUST 2011

Courtesy of Idaho Falls Magazine



They've Come so Farr
 Launched in 1911 by Roy Farr, the namesake candy company included a successful transition to Roy's son-in-law, William Call (pictured far left), and it is now in the capable hands of William's son, Kevin, (pictured above with his son, Bill, and Kevin's grandson, "Little" Kevin).

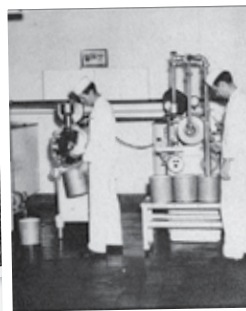
BY MARY STURGILL

When most of us are counting sheep, or anxiously awaiting the tooth fairy, there is someone heading in to work so we can satisfy our sweet tooth. It's the Farr's Candy Company employee, who goes in

at 11 p.m. to hand-dip the goodies. That's been happening for 100 years.

Ray Farr started the company in 1911. In those days, you could not buy ice cream in the store, so Ray opened a confectionary store on Broadway. With the growth of the business, the company moved to their D St. location in 1936. Farr contracted with Joe

Albertson of Albertson's grocery stores to supply ice cream. In 1943 Ray Farr passed away, leaving the company to his wife. His son-in-law, Bill Call, had just finished dental school, but jumped in to keep the company churning. So instead of becoming a dentist, "He became the dentist's best friend," says his son, Kevin Call. Kevin grew



up in the business saying, "I was born in the freezer." Even though his father advised him to go to dental school, Kevin came into the business full time in 1977. He now runs the company with his son, Bill. Kevin and Bill divide the responsibilities. Kevin is in charge of production and Bill, distribution. If you were counting, that is four generations in the family business.

This past year saw another move into a larger facility at 250 S. Blvd. The new building is four times the size of the D St. location. The move allowed Farr's to buy another freezer and increase ice cream production from 1,000 gallons a day, to 2,000 and those gallons come in 45 different flavors.

In addition to the ice cream Farr's creates 200 boxes of candy a day ranging from cherry cordials, to Peanut Cluster to the Mallow Nut. "We believe strongly in staying local," says Kevin. To get that "Farr better quality," the company uses local ingredients as much as they can. So of course when it was introduced, the Huckleberry cordial soon became a popular treat. Every product is made from scratch and hand dipped and the 18 employees are dedicated to that "Farr better quality." "They are really good folks" says Kevin. One of those good folks

has been working for Farr's for 50 years and others aren't far behind him in longevity. Employees have been there so long, that some of them have family members who also create the sweets. Farr's is truly a family business. "I wouldn't want to do anything else" says Kevin.

Nine trucks not only distribute the hand-made goodies Farr's produces, those trucks travel hundreds of miles from Jackson to

Burley and all around the region to distribute national brand candy and ice creams like Ben & Jerry's and Kemps. And if you are in a Maverick store in Phoenix you will most likely see the Huckleberry cordial since Farr's has a contract with Maverick stores to provide their homemade treats.

"We have really good customers that work well with us" says Kevin. The famous square ice cream cones at the Rainey Creek Store are Farr's ice cream and that partnership often consumes 1,000 gallons a weekend.

Trends change, but there is one thing that remains the same, our love for ice cream. "Idaho Falls is families, it's ice cream," says Kevin. Tracking into the future though, Farr's is working on a new candy bar called the Yellowstone Moose Bar. My source told me that it may be a divinity bar with peanuts and chocolate chips. Due out in a few months, it's currently in research and development. Now that's a job I'd like, can I join the family? I have my dentist on speed dial. ■

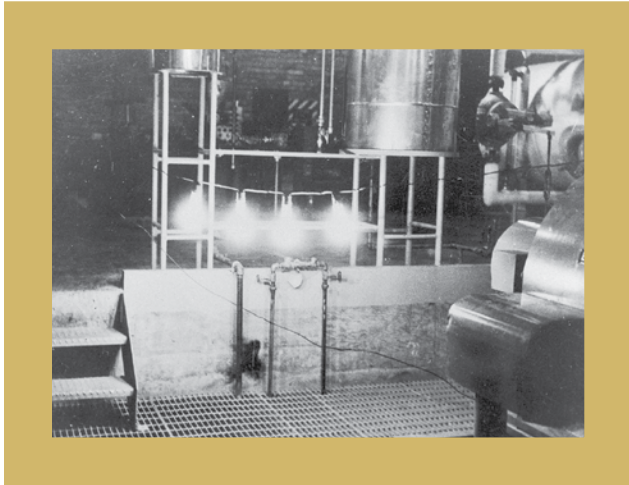


Sweet Secret

Gently churned in a kettle to reheat and add its signature flavor, a special fondant mixture is created for Farr's famous Cherry Cordial candy bar.

Sponsors and Supporters

Idaho National Laboratory



Idaho National Laboratory – Celebrating the past, while shaping the future

Idaho National Laboratory (INL) stands out as a distinctly capable science and technology resource. As one of only ten U.S. Department of Energy multi-program national laboratories, INL serves as the nation's leader for advanced nuclear energy research, development, demonstration and deployment.

Home to the unparalleled Advanced Test Reactor and related post-irradiation examination, fuel fabrication and materials testing and development assets, the laboratory carries out ever-broadening missions that ensure the nation's energy security, enable long-term environmental sustainability, and enhance national and homeland security.

Our long history of engineering feats has had an astonishing impact on the world. An early example took place in December 1951, when one of INL's reactors generated the world's first usable amount of electricity from nuclear power. Thanks to that watershed moment and the continuous innovation that followed, greenhouse gas-free nuclear energy powers the equivalent of one out of every five homes and businesses in the United States.

Today, INL nuclear research is extending the life of existing nuclear power plants, developing the next generation of nuclear reactors, manufacturing nuclear power systems for space exploration, and solving challenges associated with the nuclear fuel cycle.

Maintaining and improving the quality of life on our planet is also a critical mission for INL researchers. Our scientists and engineers are harnessing the potential of nature's diversity to solve our most vexing environmental problems.

From the hot pools of nearby Yellowstone National Park, INL teams are isolating enzymes that are capable of converting agricultural waste materials into high-value chemicals and bio-energy. And through industry and university collaboration, our researchers are applying their understanding of geological processes to address the challenges of global climate change.

The laboratory's long-standing energy research programs are complimented by critical work in national and homeland security. For example, INL supplies the world-leading armor for the U.S. Army's Abrams battle tanks and develops sensor platforms and detection systems for identifying potential weapons of mass destruction.

And as the nation's attention shifts from the physical world to the virtual world, INL cybersecurity teams are on the front line of the electronic battlefield working to safeguard our nation's power, communications, and other key systems.

On any given day, INL researchers are in pursuit of answers to the grand challenges of energy supply and security. No matter the challenge, INL is the place where passion and purpose drive us to take on globally important issues and to deliver enduring solutions.

P.O. Box 1625 • 2525 North Fremont Ave. • Idaho Falls, Idaho 83415 • 208-526-0111 • www.inl.gov
Ballville Energy Alliance, LLC

Sponsors and Supporters

Idaho Travertine Corporation

3935 N. Yellowstone Hwy.
Idaho Falls, ID 83401
208-529-4207

QUARRIERS and FABRICATORS of
TRAVERTINE, GRANITE, LIMESTONE,
SANDSTONE

Congratulations to Bonneville County on its Centennial year celebrations from Idaho Travertine Corp. owners and employees.

Situated a few miles south of Swan Valley, Idaho in eastern Bonneville County is a geological marvel. Thousands of years ago when all the necessary elements and conditions came together a deposit of limestone was transformed into TRAVERTINE, one of the worlds most prized and sought after building materials (known for generations as the exterior stone used on the Roman Coliseum). This travertine is now known around the world as Continental Buff Travertine and has been used on hundreds of building exteriors and interiors to beautify and strengthen the buildings. This beautiful stone has been used in many homes, commercial, institutional and religious buildings in Bonneville

County and surrounding counties.

In 1968, several Bonneville County and Jefferson County residents filed mineral claims on Forest Service land and formed Idaho Travertine Corp. In 1969, Theo "Ted" Orchard was hired as president of the corporation. Subsequently Ted and his wife, Joyce, purchased the corporation in 1988 and now he and his sons Tim, Cliff and Bill, and daughter Angela Burch, manage the business, which processes not only travertine but also granite, limestone, sandstone and other types of natural stone. Some of the buildings Idaho Travertine has produced stone for are: U.S. Bank, Idaho Falls; Taylor and Spori buildings on the BYU-I campus, Rexburg; Idaho Falls, Salt Lake City and Nauvoo, IL LDS Temples; Idaho Supreme Court building, Boise; Idaho Capitol building, Boise; several buildings in Washington D.C.; U.S. Embassy building in Oman and Egypt; Honolulu, HI police station; LDS Conference Building, Salt Lake City; and many more.

Bonneville County residents and elected leaders have been a great support to the growth and success of Idaho Travertine Corp.



Since 1968 Idaho Travertine Corp. has been quarrying Continental Buff Travertine, sawing, finishing, and shipping it throughout the United States and Canada.

Sponsors and Supporters

Museum of Idaho

MUSEUM *of* IDAHO

200 N. Eastern Ave., Idaho Falls
ID 83402

Phone: 208-522-1400

www.museumofidaho.org

The Bonneville County Historical Society's expansion to the Museum of Idaho led to the creation of the first major exhibition hall that offered internationally-acclaimed exhibits to the intermountain west. Opening with A T. Rex Named Sue in 2003, locals and travelers alike flooded to the Museum of Idaho to experience an unforgettable education of a lifetime.

Once referred to as "The Smithsonian of the West," by former Governor Dirk Kempthorne, the Museum of Idaho has educated over 818,000 visitors since opening their doors as a non-profit organization. Offering nationally- and internationally-acclaimed exhibits including A Space Journey, Ice Age Mammals, Giant Insects, World of the Pharaohs, Ink and Blood, Titanic, Decoding da Vinci, BODIES...The Exhibition, and

various other world-renowned exhibitions, the Museum of Idaho depends on the generous support of the community through sponsorships, memberships, volunteers, and donors in order to operate and bring in exciting exhibits to the intermountain west.

In 2010, the Museum of Idaho celebrated another monumental event in opening the Bonneville County Centennial Exhibit which highlights and celebrates the rich history of eastern Idaho.

Exhibiting the events, people and circumstances involved in the formation of the communities which became Bonneville County in 1911, the Bonneville County Centennial follows a timeline that begins in 1890 and progresses throughout the next hundred historical years. Pulling from the Museum of Idaho's collection department and artifacts on loan from the Bonneville County Heritage Association, the exhibit advances through 5 phases—each highlighting different times, people, and places that have brought the country to where it is today and will take us as we look toward the future.



As part of the Museum of Idaho's mission in providing educational opportunities for everyone to experience world-class exhibitions, they will celebrate the beginning of their 10-year anniversary in 2012 with the return of A T. Rex Name Sue. As the Museum of Idaho looks toward the future, they will continue to grow and bring historically and culturally significant exhibitions to the intermountain west.

*Sponsors and
Supporters*

Post Register

Did you know?

In 1931 Publisher E. F. McDermott of the Post newspaper purchased the Times-Register, which became the Post Register and has been operating since that time.



Since 1880, the Post Register has been eastern Idaho's leading source of information and advertising, telling the stories of the region's people and organizations. Tracing its roots to the Idaho Register, the Post Register was formed out of the merger of The Daily Post and the Times-Register in 1931, five years after J. Robb Brady (grandfather of current Post Company President Jerry Brady), founded the Post Company.

For over 131 years, the Post Register has been here to cover the highs, lows and in-betweens, the births and deaths, the victories and defeats. Though times, technologies and people change, the Post Register remains eastern Idaho's leading information source, with more than 70,000 daily readers and covering a region the size of some eastern states.

We're perhaps proudest of the fact that the Post Register and its three sister weekly papers -- the Shelley Pioneer, the Challis Messenger and the Jefferson Star -- remain locally owned. Indeed, 40 percent of our company is owned by its employees, making us one of the handful of newspaper companies in the country to be both locally and employee-owned. That makes a big difference. Many of our employees are eastern Idaho natives and some have been with us for more than 30 years. The Post Register is more than the local newspaper -- it's part of what makes eastern Idaho such a great place.

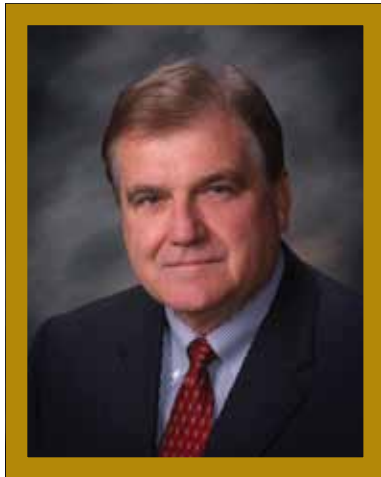
We join with you in celebrating Bonneville County's centennial. The next hundred years will look a lot different than the last hundred, but we suspect that one thing will stay the same -- the Post Register will be here to tell the stories.

Roger Plathow
Editor and Publisher
Post Register
Idaho Falls, Idaho



Sponsors and Supporters

Rocky Mountain Power



A. Richard Walje, President and CEO of Rocky Mountain Power

Rocky Mountain Power congratulates Bonneville County, Idaho as it celebrates its Centennial year. It's worth noting that the county and Rocky Mountain Power have been partners for nearly 100 years. Electric service by predecessors of Rocky Mountain Power began serving customers in Bonneville County in April 1913. At that time, dozens of small electric power companies, including Idaho Power and Transportation Co. in Idaho Falls, were consolidated into a larger, more efficient regulated utility company.

Southeastern Idaho was from the beginning an important part of Utah Power & Light Co., which later became Rocky Mountain Power. Utah Power completed development of the Bear River system in the 1920s into one of the first multipurpose reclamation projects in America with immense value as a source of power and irrigation for agriculture in the area. The river and natural Bear Lake were connected by a canal

that permitted the lake to hold and utilize spring runoff water. A pumping plant was built to lift the water from the lake into a man-made canal to return the stored water to the river for use downstream as the irrigators required it. Four reservoirs and five power plants, totaling 125,000 kilowatts of capacity, were built at no cost to the farmers or to the federal government. For many years, they were a primary source of electricity for the company's customers in Idaho, Wyoming and Utah. The projects continue to provide benefits to farmers, electric consumers and, in recent years, recreation use and wildlife habitat.

The use of electricity for businesses and homes grew steadily. In 1912, only 30 percent of American industry was run by electricity. By 1929, that figure had increased to 70 percent. Residential electric service took hold more slowly, with many rural areas still without electric utility service well into the 1930s. Today, however, it's hard to

imagine modern life without the convenience and efficiency of electricity.

Today, Rocky Mountain Power serves nearly 71,000 customers in southeastern Idaho with safe, reliable electric service from coal, natural gas, wind power, hydroelectric and geothermal sources. Together, we face a bright future with Bonneville County as we look to the next century of service.

For information, contact:

David Eskelsen 801-220-2447
Media Hotline 800-775-7950

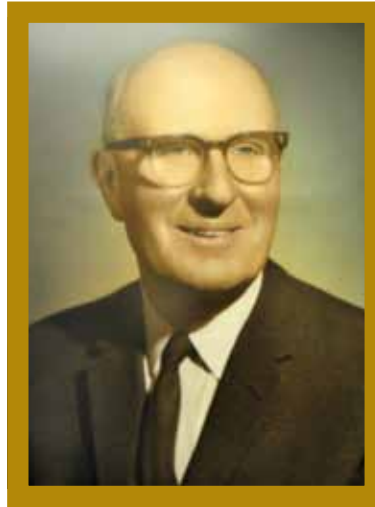
Sponsors and Supporters

The Smith Group

In 1917, David Smith decided to move to Idaho Falls, so he searched for a business that he could buy for his livelihood. He found an automotive business in Rigby and made a deal with the owners to purchase the business. Later he realized that the business had more liabilities than assets, and that the assets had little to no value. Nevertheless, he sought out a banker to finance his purchase. The banker, Mr. A. E. Merrill, told him that it was foolish to pay money for a business that was worth less than nothing, and advised him to start a new business with no liabilities. David said, "No, Mr. Merrill, I made an agreement with these gentlemen and I intend to keep my part of the agreement." Mr. Merrill said, "David, if that is the way you do business, this bank will loan you whatever you need at any time.....and no signature is required."

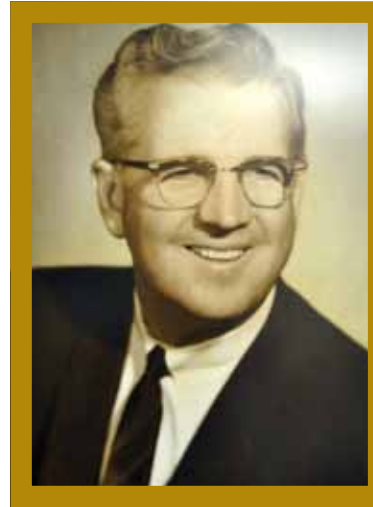
Thus, David Smith's integrity set the foundation for the Smith Group and established the pattern for the way the Smith Group has done business ever since.

In 1919, David put his own name on the business: The David Smith Company. This is why we use 1919 as the anniversary date of



David Smith

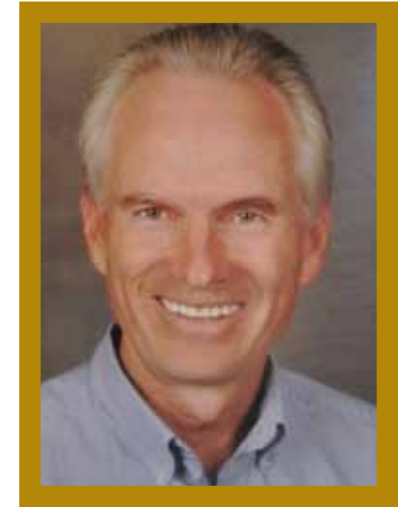
the business. In 1921, he took on Chevrolet, which then was a new upstart brand. Smith Chevrolet is now one of the oldest Chevrolet dealerships in the country. Later, after World War II, David's son Albon came into the business and purchased it some years later. He moved the operations to Holmes and Yellowstone in 1963. Albon had seen a need for a smaller car than Chevrolet was producing at that time. He told them that they should build something that would compete with some of the new little imports. They said that these imports would never



Albon Smith

amount to anything. Albon was not convinced, and in 1970 he became one of the first Honda dealers.

Albon's son Stafford came into the business in 1975 and purchased it in 1982. As the business continued to expand, Stafford felt that it was not appropriate to market all of the divisions of the company as Smith Chevrolet, so he called the entire operations "The Smith Group." The Smith Group is now comprised of Smith Chevrolet, Smith Honda, Smith RV, Smith Chevrolet Outlet Center, Motor



Stafford Smith

City in Pocatello, Labrum's Adventure Center as well as other ancillary companies. Stafford, now in his 37th year in the business, hopes that some of his children will become fourth generation automobile dealers, and that they will continue the legacy of integrity that their great grandfather David started nearly 100 years ago.

Sponsors and Supporters

U.S. Department of Energy Idaho Operations Office



The Historical Importance of INL in the DOE Federal Lab System

By Richard Provencher
Manager, Idaho Operations
Office U.S. Department of
Energy

The State of Idaho is truly fortunate to host the Idaho National Laboratory as one of only 17 national labs in the Department of Energy system. The INL is a Federally-Funded Research and Development Center, which allows a long-term relationship between the government and the lab, and the INL to attract high-quality researchers and scientists with specialized expertise.

The INL is a premier multi-program research and development laboratory with a focus on applied engineering, with an emphasis on research, development, demonstration and deployment of new technologies. The lab has a strong emphasis on energy and national security R&D activities.

Originally known as the National Reactor Testing Station (NRTS), the lab was founded in 1949 and immediately became a world leader in commercial nuclear power applications. Virtually every commercial power reactor in the world can trace elements of its design, safety features and/or materials selections back to work done in Idaho.

The 52 reactors built and operated at the INL over the years were basically designed to test materials for use in reactors and demonstrate various reactor designs in the areas of safety and performance. While other national laboratories were focused largely on nuclear weapons development, NRTS was THE place in the world for commercial nuclear R&D.

As the same time, NRTS was becoming a contributor to national defense, reprocessing spent government-owned fuels to recover highly-enriched uranium; hosting the Naval Reactors Facility for training sailors on reactor prototypes and conducting propulsion reactor R&D; and disposing of weapons-generated waste from other sites.

As the world changed, so did the name of the laboratory — and its

mission focus. The NRTS became the Idaho National Engineering Laboratory in 1974, to reflect its growth into R&D activities outside commercial power and defense applications. The INEL became involved in geothermal and hydropower research, electric vehicle development and wind and solar research, among other things.

As cleanup became a much larger portion of its mission, the INEL became the Idaho National Engineering and Environmental Laboratory in 1997, and evolved into a national leader in nuclear waste cleanup and management. Finally, in 2005, the Department of Energy merged the INEEL and Argonne National Laboratory-West to create the Idaho National Laboratory, which was once again tasked as the nation's leader in commercial nuclear power research.

Today, the lab supports the nation with a wide range of energy and national security research capabilities, and we stand ready to continue to provide technological solutions to national problems as they arise in the future.



Richard Provencher

Sponsors and Supporters

William and Jeanne Rigby

Coal and Ice Companies – In winter they delivered coal to heat the homes and in summer they delivered ice for the ice boxes, the predecessor of refrigerators. The delivery men would bring their truck up the alley and drop off a 25 or 50 pound block and with a black rubber cape over their back they would hoist it over their back and pack it into the homes. We kids loved to wait for them and they always left a few slices of ice for us to “steal” and refresh ourselves.

Doctors made house calls whenever you were too sick to go out. They would come by morning, noon, or night. When you were little you always felt better when the Doctor put his hands on you and checked you out.

If you had mumps, measles, Scarlet fever or any contagious disease they would put up a sign on your front door warning unsuspecting visitors about your contagious disease.

Many young men traveled on the rails by hitching a ride. They would come through our neighborhood asking for a handout. If they asked if there were any chores to do to get a sandwich or something to eat my mother always found something

for them. If they just asked for a handout, she would send them away.

Besides going to Heise for a swim, a big thrill for us kids was taking the ferry across the river. There were no bridges then and they had a ferry operating. The lower one was where the bridge is now and the upper one up the river. My family always took the lower. Sometimes your imagination would get away from you and you imagined the cable breaking and being swept down river with no controls.

The Torneten (Hazel Rose’s parents home) Fox Farm was way out in the country, now 11th Street where it is intersected by the canal. We walked from the 800 block of 10th Street through a field to 11th, which was then just a dirt roadway. Their home was on the west side of the canal and a wooden bridge crossed the canal. All the cages and foxes were housed on the other side. They had a surf board with a long rope which we would attach to the bridge and then play like we were being pulled by a boat and would manipulate the board with our feet from one side to the other. What a cool way to spend the summer.



William and Jeanne Rigby



Upper Heise ferry.

County Centennial High School Choir Members

Bonneville High School

*Steve Dresen,
Choral Music Director*

Matthew Anderson
Challis Carter
Ben Day
Brandon Eldridge
Austin Fitzgerald
Spencer Fitzgerald
Darci Fullmer
Laikin Guthrie
Theresa Gustaverson

Johnny Lott
Ian Meldrum
Cierra Munns
Dayia Murdock
Blake Nield
Natalie Nix
Kate Pedersen
Christy Petersen
Spencer Pymm
Ryan Rapp
Megan Reeves
Rachael Roos
Brittney Seely

Andrew Austin
Kati Baker
Scott Baldwin
Lindsey Beckstead
Ellis Benson
Benjamin Bodily
Alyssa Bromley
Taylor Brooks
Mykette Brown
Jennie Burke
Curtis Calder
Corbin Chamberlain
Madison Chavez
Kade Christensen

Madison Jarvis
Amanda Johnson
Dominick Johnson
Teagen Johnston
Paige Kohler
Nathan Kolsen
Jaxson Landon
Heather Lords
Weston Mackintosh
McKinzie Magleby
Paxton McCammon
Tyson McDonald
Tess Moffett
Jake Murphy
Hannah Murri
Brook Nelson
Hailey Nelson
Ryley Nelson
McKinzie Norman
Mattilyn Oswald
Brittany Permann
Whitney Peterson
Courtney Philips
Blake Phippen
Parker Piper
McKinlie Randall
William Riggs
Megan Ruiz
Whitney Sargent
Samuel Scoville
Derek Southwick
Christi Spiel
Tanner Stenquist
Brandon Tatsey
Henry Thompson
Fiona Weathersby
Colbie Youngberg

Idaho Falls High School

*Zola Jensen,
Choral Music Director*

McKenna Bateman
Jason Cannon
T.J. Crose
Brooklynn Dyer
Greta Gokey
Brandon Griffin
Mickenzie Haan
Amber Harmon
Jonathon Hatch
Lecia Hinkson
Melanie Jackson
Cabe John
Tyler Lewis
Nathan Marshall
Jacee Martin
Nikki Parker
Derek Roper
Gabe Simms
Adam Tak
Ally Urling
Jason Vielma
Marissa Walker
Hailey Weatherby
Shawn Wells
Jodee Whittier
Rachel Worthington
Leslie Wright

Skyline High School

*Mark Anderson,
Choral Music Director*

Tessa Adams
Aaliyah Argyle
McKayla Athchley

Danielle Black
Michelle Castro
Laurice Cecil
Mitchell Clement
Rebecca Coates
Kimberly Flatland
Clayton Fossum
Krissa Gilson
Devin Good
Alexis Hansen
Carson Harrawood
Andrea Holmgren
Sydni Hurt
Corinna Kowallik
Audra Landeen
BreKana LaPier
Jessie Martinez
Zachary McGary
Abygail McKenna
Erika Morgan
Adrian Murr
Catrena Pepcorn
Alyssa Rice
Brandon Seaman
Chance Smith
Gina Smith
Taya Smout
Hannah Webb
Lisa Werner
Elise Wilding
Mikaela Wilkins
Tancia Williams
Megan Winn
Jazmyne Yarger
Jenna Zollinger
Chris Zumaya

Did you know?

In 1803, violinist Alma Marker,
opened the first music store in
Bonneville County



Chloe Haderlie
Brandon Hemsley
Millie Hill
Matthew Humpherys
Haden Iglinski
Ryan Jack
Ben Johnson
Jessica Johnson
Kaleb Johnson
Matthew Johnson
Scott Johnson
Taylor Landon
Olivia Long

Erica Shenton
Rebecca Snow
Nathan Tucker
JoAnne Wadsworth
Kaylee Ward
Jordan Ward
Dan Whiting
Patrick Wilson

Hillcrest High School

*Camille Blackburn,
Choral Music Director*

Austin Andersen
Natalee Astel

Caden Cook
Tanner Cook
Jesse Crow
Sadie Duncan
Abigail Fisher
Alexa Gillespie
Taylor Gunnell
Taylor Hale
Lindsey Hall
Mary Hall
Alicia Hawkes
Courtney Hebdon
Caden Hill
Kyler Howell
Jaden Hunsaker

Supporters and Volunteers

Bonneville County Heritage Association Board of Directors

Mary Jane Fritzen, Chair
Gary Goodson, Co-Chair
Nancy Moir
Janet Jensen-Fullmer
Reuel Smith
Davidjohn Stosich
Kel Howell
Ann Rydalch
Jerry Johnson
Susan Mardis
Bill Rigby
Joe Stewart
Todd Brown
Greg Stoddard
Jim Bennett
Dane Watkins
Commissioner Dave Radford

Authors of Centennial Community History Presentations

Joe Stewart: Osgood
Jan Blickenstaff: Brunt Building
Lynna & Leland Howard:
Backcountry County Roads
Connie Otteson, Todd Brown,
Deanna Hovey: School book for local
history
Robert Hoff, Doyle Arave, Lynn
Clapp, Lynn Blatter: Taylor &
Owendale
Becky Freeman, Reed Moss, Ruby &
Bruce Sharp: Ririe, Antelope, Ririe
Reservoir
John Martinson, Delbert Winterfeld:
Palisades Dam
Frank Randall, Caroline Mackay:
Coltman, Ucon
Gordon Moir: York
Steve Taggart: Ancient Ferns

Jim Bennett: Tautphaus Park
Lavon Reed: DVD of Tautphaus Park
Don Miley: Idaho National
Laboratory
Lane Allgood: Partnership for
Science & Technology
Richard Provencher: INL/
Department of Energy Idaho
Operations Office
Susan Mardis, Louis Thiel: New
Sweden, Canals & Irrigation
Aleen Jensen, Jean Schweider, Connie
Otteson, Mel Richardson: Ammon,
Dehlin, Ozone
ZoAnn Simmons, Sharon Rockwood:
Iona
Richard Adams, Thornton Waite:
Stagecoaches and Railroads
Jack Scott: Lincoln, & Centennial
song by Lin Carlson
Afton Bitton: Swan Valley area
Lavon Reed: DVD of Irwin
Commissioner Dave Radford, Ellen
Carney: Mt. Caribou, Gray's Lake
Representative Linden Bateman:
Idaho Falls

Community Centennial Celebrations

Ice Cream Social: Farr Candy
Company
Idaho Falls July 4 Parade & Liberty
Festival: Idaho Falls Chamber of
Commerce
Scoop Jam: Harris Publishing
Iona Days: Iona Historical
Association
Alan Butler Bike Race: Idaho Falls
Downtown Development
Corporation
Ammon Days: City of Ammon
Cars and Carriages: The Smith
Group
Josh Turner Concert: Idaho Meth
Project



Early transportation to school.

Centennial Gala Committee

Ann Rydalch, Chair
Kris Burnham
Lori McNamara
Camille Blackburn
Joe Stewart
Davidjohn Stosich
Paul Jenkins
Bob Skinner
Terry Miller
Brad Bugger
Nancy Moir
Ushers for Gala Program: Grand
Teton Council Scouts

Supporters and Volunteers

Thanks to the many supporters and volunteers that have made the Bonneville County Centennial Celebration possible.

Adams, Richard
(Stagecoach Presentation)

Allgood, Lane
(The Decades & INL Presentation)

Anderson, Cody
(IFF Pipes & Drums)

Anderson, Mark
(Centennial High School Choir)

Arave, Doyle
(Taylor Presentation)

Arnoldsen, LaRayne
(Book Committee)

Bateman, Linden Rep.
(Idaho Falls Presentation/
Legislature Resolution)

Beckstead, Linda
(Assistant Secretary)

Bennett, Jim
(BCHA Board, Tautphaus
Presentation)

Bitton, Afton
(Swan Valley Presentation)

Blackburn, Camille
(Gala Committee, Centennial High
School Choir Coordinator)

Blatter, Lynn
Owendale, Ammon, Taylor
Presentation

Braun, Julie
(Bone Presentation)

Brown, Todd
(School Book Chair)

Bugger, Brad
(Gala Committee)

Burnham, Kris
(Gala Committee)

Burtenshaw, Bob
(July 4th Float)

Butikofer, Scott
(Early Program Video)

Call, Kevin
(Ice Cream Social)

Carlson, Lin
(Centennial Song)

Carney, Ellen
(Gray's Lake Presentation)

Chamber of Commerce
(July 4 Parade)

Christensen, Roger
(County Commissioner)

Clapp, Lynn
(Taylor Presentation)

Crockett, Alice
(Beautiful Bonneville Book)

Crow, Val
(Ammon Presentation)

Davis, Bart Sen.
(Legislature Resolution)

Downtown Development Corp.
(Bike Race)

Dresen, Steve
(Centennial High School Choir)

Erickson, Coleen
(Cong. Simpson's office)

Farrer, Clarke
(Grand Teton Council Scouts)

Foster, James
(Gala Color Guard Sheriff's Office)

Freeman, Rebecca
(Ririe Presentation)

Fritzen, Mary Jane
(BCHA Board Chair)

Fuhriman, Jared Mayor
(Proclamation Area Mayors)

Fullmer, Janet Jensen
(BCHA Board Treasurer)

Goodson, Gary
(BCHA Board Co-chair)

Groberg, Richard H.
(Railroad)

Guay, Linda
(Book Committee)

Hansen, Barbara
(County Treasures)

Hansen, Christine
(Museum of Idaho)

Hansen, Joelyn
(BCHA Newsletter)

Hansen, Kirsten
(Museum of Idaho)

Hansen, Lisa
(Invitations)

Hansen, Marilyn Hoff
(Auperlie with Bob Hoff)

Hansen, Mark
(County Treasurer, Gala Program)

Hansen, Rod
(Museum of Idaho Bonneville
Exhibit)

Harker, Leo
(Model Railroad)

Harmston, LaDean
(Museum of Idaho R&R
Room)

Harris Publishing
(Scoop Jam)

Hart, John
(School Book Illustrator)

Hoff, Bob
(Taylor Presentation)

House, Judy
(School Book Committee,
Museum of Idaho)

Hovey, Deanna
(Supplement Text Author)

Howard, Leland
(Backcountry Photo Program)

Howard, Lynna
(Backcountry Photo Program)

Howell, Kel
(BCHA Board)

Huddleston, Leslie
(Sen. Crapo's office)

Idaho Falls Magazine
(Centennial Presentations Publicity)

Isom, Julie
(Eagle Rock Buildings)

Jack, Rodney
(First Coltman DVD)

Jacobson, Jerry
(Schools Program)

Jenkins, Paul
(Gala Committee, Original County
History Video Producer)

Jensen, Aleen
(Ammon Presentation)

Jensen, Zola
(Centennial High School Choir)

Johnson, Jerry
(Parades, Community Events)

Kenney, Richard
(Outreach, Tours, Treasures)

Landon, Karen
(Ucon Presentation)



The Sugar Factory in Lincoln.

Supporters and Volunteers

- Landon, Sherrol
(Ucon Presentation)
- Longmore, Ron
(County Treasurer, Newsletter)
- Mardis, Susan
(BCHA Board, New Sweden Presentation)
- Martinson, John
(Palisades Presentation)
- Maley, Lisa
(Gala Production)
- McJunkin, Heidi
(Web Site)
- Mackay, Caroline
(Ucon Presentation)
- McNamara, Lori
(Gala Committee)
- McNamara, Caitlin
(Gala Production)
- Miley, Don
(INL Presentation)
- Miller, Terry
(Gala Committee)
- Miskin, Mark
(Miskin Scraper)
- Miskin, Richard
(Miskin Scraper)
- Moir, Gordon
(York Presentation)
- Moir, Nancy
(BCHA, Invitations)
- Moore, Kathy
(Postcards)
- Moss, Reed
(Antelope Presentation)
- Mueller, Blake
(County Assessor, Gala Program)
- Otteson, Connie
(School Book, First Secretary, Writer, Ozone Presentation)
- Pennock, David
(Museum of Idaho)
- Pickett, Bruce
(County Prosecuting Attorney, Gala Program)
- Piet, Steve
(Speech Contest)
- Post Register Reporters
(Newspaper Articles)
- Place, Eugene
(Idaho Historical Society Board)
- Priest, Lori
(INL)
- Provencher, Rick
(INL Presentation, DOE-ID Operations Office)
- Radford, Dave
(BCHA Board, Commissioners Rep., Mt. Caribou Presentation)
- Randall, Frank
(Coltman)
- Rasmussen, Ina
(Coltman Presentation)
- Reed, Lavon
(Filming of Presentations)
- Reid, Earline
(Minutes, Tour Committee)
- Richardson, Mark
(Publicity)
- Richardson, Melvin
(July 4th Float)
- Rigby, Bill
(BCHA Board; Bank Rep.)
- Riplinger, Maureen
(School Rep.)
- Rockwood, Sharon
(Iona Presentation)
- Rooney, Mr. and Mrs. Jim
(July 4th Float)
- Rope, Susan
(Charter Schools)
- Russell, Malcolm (Bud)
(INL-SL1 Presentation)
- Rydalch, Ann
(BCHA Board, Fundraising, Gala & Opening Chair)
- Rydalch, Doug & Julie
(Gala Production)
- Rydalch, Kourtnei
(Gala Production)
- Rydalch, Vernal
(Program Photos)
- Sayer, Laurel
(Cong. Simpson's Office)
- Schwieder, Jean
(Dehlin Presentation)
- Scott, Jack
(Lincoln Presentation)
- Sealander, David
(New Sweden Presentation)
- Sharp, Bruce
(Ririe Reservoir Presentation)
- Stewart, Joseph
(Treasures, BCHA Board, Osgood, Gala Committee)
- Stoddard, Greg
(Museum of Idaho, BCHA Board)
- Stosich, Davidjohn
(Art, BCHA Board, Gala Committee)
- Taggart, Steven
(Ancient Ferns)
- Taylor, Amy
(Sen. Risch's office)
- Thiel, Louis
(Canals, Irrigation Presentation)
- Tomita, Teresa
(I.F. Old Time Fiddlers)
- Waite, Thornton
(Railroad Presentation)
- Wareing, Doug
(EITC Wind Ensemble)
- Watkins, Damond
(Melaleuca, T-shirts)
- Watkins, Dane
(Fundraising, BCHA Board)
- Watkins, Dane, Jr.
(Judicial History Presentation)
- Wilde, Paul
(County Sheriff, Gala Program)
- Wilson, Vanetta
(Chesbro Music Program)
- Winterfeld, Delbert
(Palisades Presentation)
- Sharp, Ruby
(Ririe Presentation)
- Simmons, ZoAnn
(Iona Presentation)
- Skinner, Bob
(Gala Committee/Veterans)
- Smith-Putnam, Cindy
(EIRMC)
- Smith, Reuel
(BCHA Board, Program Photos)
- Smith, Stafford
(The Smith Group Cars & Carriages)
- Snarr, Linda
(Secretary)
- Southwick, Roy
(July 4th Float, KID)
- Staker, Lee
(County Commissioner)
- Steele, Ralph
(Former Commissioner)



Did you know?

A focal point of Idaho Falls is the waterfalls created by a diversion dam, which provides hydroelectric power as the original dam was built in 1909.



Photos used in the program courtesy of: Vernal Rydalch, Reuel Smith, Bonneville County Historical Society, and Community History Authors.